



EZLB

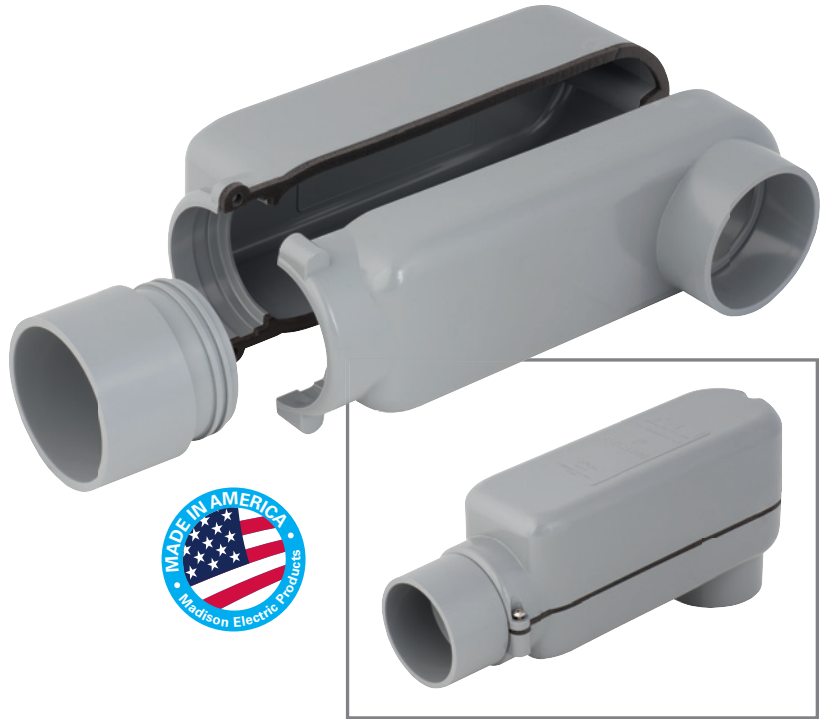
EZ as 1-2-3!

Madison's EZLB provides the most efficient method of installing large service entrance wire through a right angle opening. No more struggling to force the wire into a tight connection. Our patented 3-piece design allows the installer plenty of room to maneuver the wire into place. Splitting the EZLB in half has eliminated the pinch points that has caused electricians problems for decades. The EZLB is a one man installation saving time, money, and eliminating wire damage.

The EZLB installs in just three simple steps:

1. Install the collar fitting onto 2" PVC pipe.
2. Bend wire at 90 degrees and install into the back half of the EZLB.
3. Finish by installing the front cover.

- Ideal for service entrance
- 3-piece design for easy installation
- Includes gasket for wet locations



Item#	Description	Trade Size	Master Carton	Master Weight
EZLB200	EZLB SERVICE ENTRANCE CONDUIT BODY	2"	2	3.10 lbs.



ME products.net

