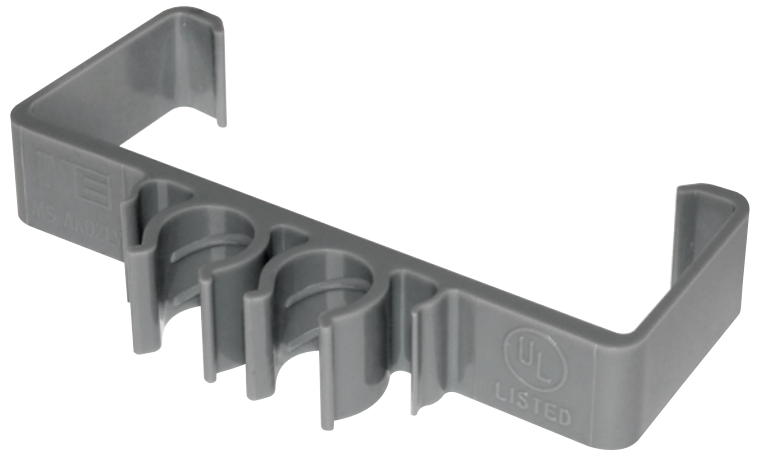




Keep those pliers in your pocket!

Madison Electric’s Clip-it™ makes installing MC cable a snap. No more reaching for tools to secure your cable. Madison Electric makes it fast and easy. Our patented rifled polycarbonate design will hold MC or armored cable 12/2 through 10/3, eliminating the unsightly sagging you get with other supports. The Clip-it MC products are made from durable hi-impact polycarbonate, and can be used universally. Patented.

- Sturdy polycarbonate
- Fits MC/AC Cable 12/2 thru 10/3
- Suitable for indoor use only
- Maximum operating temperature rated 80°C
- Meets UL 1565 for positioning



Now supports MC/AC and low voltage cable

MS-AK02LV only

Item#	Description	Trade Size	Inner Carton	Inner Weight	Master Carton	Master Weight
MS-AK250	2.5" 3-CIRCUIT STRAP	3-CIRCUIT	100	600	3.35 lbs.	20.10 lbs.
MS-AK01	4" 1-CIRCUIT STRAP	1-CIRCUIT	100	600	2.35 lbs.	14.10 lbs.
MS-AK02LV	4" LOW VOLTAGE 2-CIRCUIT STRAP	2-CIRCUIT	100	600	2.90 lbs.	19.00 lbs.
MH-AK02	4" HORIZONTAL 2-CIRCUIT STRAP	2-CIRCUIT	100	600	2.15 lbs.	14.30 lbs.
MAK6-4	6" 4-CIRCUIT STRAP	4-CIRCUIT	100	600	4.60 lbs.	28.90 lbs.
MBD214-1	1-CIRCUIT PIGGY-BACK CLIP	1-CIRCUIT	100	1000	0.35 lbs.	4.25 lbs.



ME products.net





Simplify with Clip-it Channel Strips.

Until now there has never been an MC support so fast, so versatile, so compact and so easy to use. The Clip-it Channel Strip system gives your electrician the ability to use MC Cable and have a finished product they can be proud of. Simply snap the sturdy polycarbonate MC Clip into the Channel Strip, then snap your cables in place. It's that fast, and that simple. Channel Strip comes in standard 20" lengths and can be cut to your required size. With only three screws, you have the flexibility to support up to 20 cables at a time. Patented.

- Fits MC/AC cable 12/2 thru 10/3 (MAG840)
- Fits 1/2" thru 1" PVC, Rigid and EMT Conduit
- Suitable for indoor use only
- Maximum operating temperature rated 80°C
- Meets UL 1565 for positioning
- Meets NEC 2008 code for plenum ratings



Item#	Description	Trade Size	Inner Carton	Inner Weight	Master Carton	Master Weight
MAG840	1/2" MC/AC CABLE 12/2 THRU 10/3	1/2"	100	1.53 lbs.	600	9.15 lbs.
MKM28	1/2" CONDUIT CLIP	1/2"	100	2.76 lbs.	600	16.55 lbs.
MKM30	3/4" CONDUIT CLIP	3/4"	100	2.85 lbs.	600	19.05 lbs.
MKM32	1" CONDUIT CLIP	1"	100	3.35 lbs.	600	22.25 lbs.
MRN236	CHANNEL STRIP	20"	10	2.25 lbs.	250	44.85 lbs.
MRN237*	CENTER STUD STRAP	14"	10	5.00 lbs.	40	25.50 lbs.
MJV-840	BAR JOIST CLIP	1/2"	100	2.65 lbs.	600	17.55 lbs.

*MRN237 is not UL Listed

