

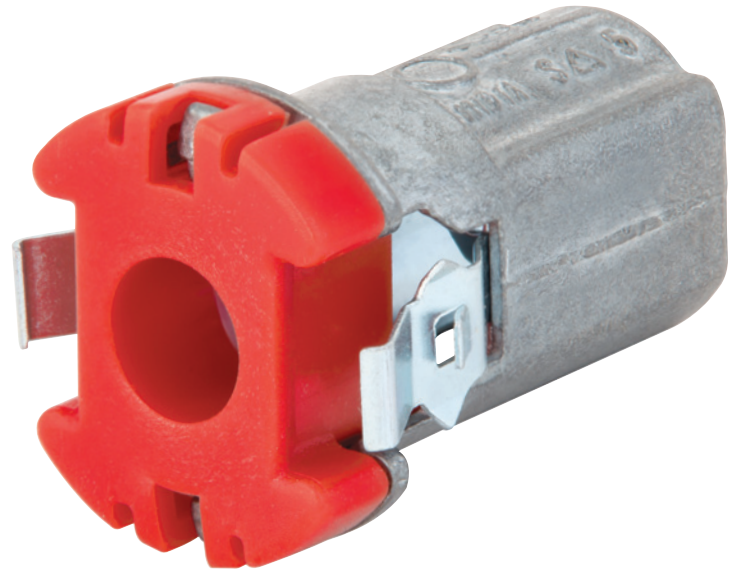


Cut-in Snap Lock

An innovation in electrical fittings

Madison's Cut-in Snap Lock MC Connector provides significant labor savings when connecting metal clad or armored cable in old work (cut-in) electrical box installations. No tools are required when assembling to the cable or box. After installing the old-work box in the wall and fishing the cable through the box, simply snap the cable into the fitting and snap the fitting into the box. The Cut-In Snap Lock is also easily removed without tools and it is reusable.

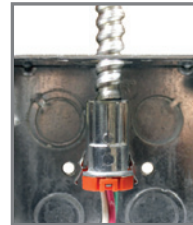
- No tools required
- Robust, pre-assembled bushing
- Easy removal & reusable
- Fits 1/2" knockout
- Fits AL & steel AC 14-2 thru 10-3, MC/MCI-A/HCF 14-2 thru 10-3



Pull conduit through knockout, insert wires in fitting



Snap conduit into the fitting



Push fitting and conduit back thru knockout



Snap into knockout from inside the box



Squeeze tabs to release fitting for removal

Item#	Description	Trade Size	Inner Carton	Inner Weight	Master Carton	Master Weight
MCS38	CUT-IN SNAP LOCK MC CONNECTOR	3/8"	25	1.45 lbs.	100	5.80 lbs.

