



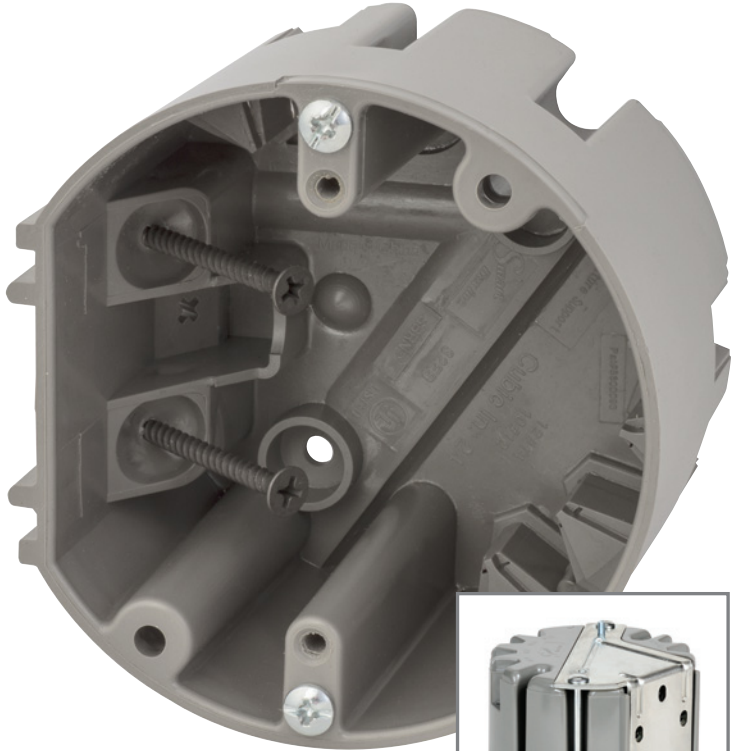
SmartBox

FAN & FIXTURE

Unique design & unmatched versatility.

The light fixture Smart Box is a unique ceiling box with a UL listed rating for 50 lb. light fixture support. It is the only nonmetallic ceiling box that includes (2) #8 x 1" fixture support screws. This box is extra deep for mounting all smoke and carbon monoxide detectors. It is also quick and easy to remove for wiring between floors, cathedral ceilings and inaccessible attics.

Add a cold rolled steel L-Bracket to this Smart Box and you now have a UL listed 50 lb. ceiling fan support box and a 75 lb. light fixture support box that works for all kinds of job situations. It is side beam mounted with (3) 2" #10 hex head screws vs. bottom beam mounted. Ideal for upgrading light fixtures to light ceiling fan combos, this one of a kind product has unmatched versatility that is immediately recognized by the electricians in the field.



MSBRND
Inset shows added bracket to upgrade to MSBFAN



MSBRND

- Quicker to install than a nail on box
- Easily upgraded to a MSBFAN product
- Easily removed without creating damage to wall
- Extra thick wall material creates stability & rigidity
- Factory installed (2) #8 x 1" Phillips/slotted screw

MSBFAN

- Ideal for new and old work applications
- Heavy duty design for support of moving loads
- Extra deep for ceiling fan components.
- Nylon locking nuts for secure ceiling fan attachment
- Factory installed (3) #10 x 2" Hex head screws



Item#	Description	Trade Size	Cubic Inch	Master Carton	Master Weight
MSBRND	CEILING BOX 50 LB. SUPPORT	N/A	24.00	10	3.55 lbs.
MSBFAN	CEILING FAN 50 LB. SUPPORT 75 LB. LIGHT FIXTURE SUPPORT	N/A	24.00	10	7.00 lbs.



ME products.net

