



SmartBox

SHARK TOOTH

The only box that cuts its own hole.

Absolutely a first of its kind, Shark Tooth was designed with the electrician in mind for installing over head lighting, wall sconces and smoke detectors. A built-in hole saw creates the perfect sized hole every time, while also making it easy to center-on-center mark. A piercing drill bit located at the center of the blade allows for pinpoint accuracy, requiring very little measuring and marking up the wall. Raised mounting rings with center hole are located inside the back wall of the box for surface mount installations, basement or attic studs.

- A perfect cut every time
- No special hole saw or template required
- Location accuracy during installation
- Quick and easy to install
- Mounting hole spacing accommodates 3/0 and 4/0 fixtures
- Supports fixtures up to 6 lbs.
- Requires 9/16" driver (not included)

NOTE: Not for use on lath and plaster walls



* See back for installation instructions

learn MORE

Visit MEsmartbox.com to see the Shark Tooth in action!

Item#	Description	Trade Size	Cubic Inch	Carton Qty	Master Weight
MSBST250	SHARK TOOTH ROUND DEVICE BOX	2.5" Deep	18.3	8	2.40 lbs.



ME smartbox.com





INSTALLATION INSTRUCTIONS

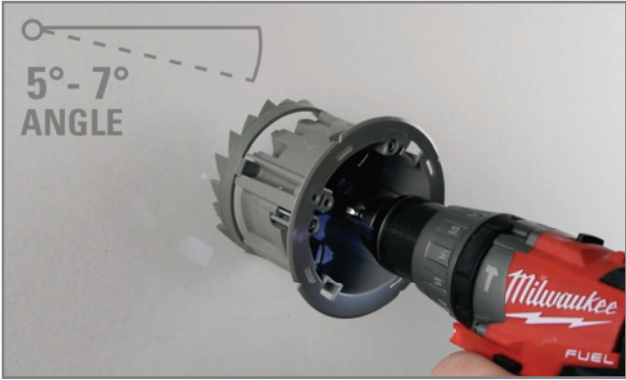
NOTE: Not for use on lath and plaster walls

SmartBox

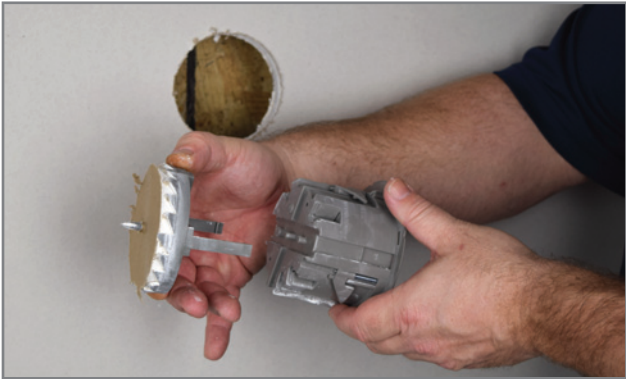
SHARK TOOTH



1. Use a standard 9/16 driver and cordless drill, set to "Drill" mode, to install the Shark Tooth fixture box.



2. Be sure to hold the box at a 5° - 7° angle when you start to drill the hole.



3. Once the perfect hole is cut, remove the saw blade from the box by releasing the blade leg tabs located on either side of the box.



4. Once the wire is inserted, install the box by tightening the (3) wing tab screws until the box is held securely in place.

learn MORE

Visit **MEsmartbox.com** to see the Shark Tooth in action!



ME smartbox.com

