



When running conduit, having inferior conduit bodies can grind a project to a halt.

Breaking or coming loose due to poor fit can cost valuable time and labor. All of Madison's conduit bodies are made from high grade aluminum or malleable iron for Rigid conduit, and aluminum for EMT.

Madison produces quality at an affordable price. Available in all conduit body types and with a wide range of conduit sizes we have exactly what you need to get the job done.

conduit bodies 45

RIGID CONDUIT BODIES C-TYPE

Allows access for inspection, pulling and maintenance



Material: Aluminum

Certifications: UL Listed, CSA Listed

Features: Threaded body for Rigid/IMC conduit



STANDARD				W/COVER & GASKET			
ITEM#	TRADE SIZE	INNER QTY	MSTR. QTY	ITEM#	TRADE SIZE	INNER QTY	MSTR. QTY
LC-50	1/2"	10	100	LCLA-50	1/2"	10	100
LC-75	3/4"	10	50	LCLA-75	3/4"	10	50
LC-100	1"	5	25	LCLA-100	1"	5	25
LC-125	1-1/4"	2	10	LCLA-125	1-1/4"	2	10
LC-150	1-1/2"	2	10	LCLA-150	1-1/2"	2	10
LC-200	2"	1	5	LCLA-200	2"	1	5
LC-250	2-1/2"	N/A	1	LCLA-250	2-1/2"	N/A	1
LC-300	3"	N/A	1	LCLA-300	3"	N/A	1
LC-350	3-1/2"	N/A	1	LCLA-350	3-1/2"	N/A	1
LC-400	4"	N/A	1	LCLA-400	4"	N/A	1

RIGID CONDUIT BODIES LL-TYPE

Allows access for inspection, pulling and maintenance



Material: Aluminum

Certifications: UL Listed, CSA Listed

Features: Threaded body for Rigid/IMC conduit



STANDARD				W/COVER & GASKET			
ITEM#	TRADE SIZE	INNER QTY	MSTR. QTY	ITEM#	TRADE SIZE	INNER QTY	MSTR. QTY
LL-50	1/2"	10	100	LLLA-50	1/2"	10	100
LL-75	3/4"	10	50	LLLA-75	3/4"	10	50
LL-100	1"	5	25	LLLA-100	1"	5	25
LL-125	1-1/4"	2	10	LLLA-125	1-1/4"	2	10
LL-150	1-1/2"	2	10	LLLA-150	1-1/2"	2	10
LL-200	2"	1	5	LLLA-200	2"	1	5
LL-250	2-1/2"	N/A	1	LLLA-250	2-1/2"	N/A	1
LL-300	3"	N/A	1	LLLA-300	3"	N/A	1
LL-350	3-1/2"	N/A	1	LLLA-350	3-1/2"	N/A	1
LL-400	4"	N/A	1	LLLA-400	4"	N/A	1

RIGID CONDUIT BODIES LB-TYPE

Allows access for inspection, pulling and maintenance



Material: Aluminum

Certifications: UL Listed, CSA Listed

Features: Threaded body for Rigid/IMC conduit



STANDARD				W/COVER & GASKET			
ITEM#	TRADE SIZE	INNER QTY	MSTR. QTY	ITEM#	TRADE SIZE	INNER QTY	MSTR. QTY
LB-50	1/2"	10	100	LBLA-50	1/2"	10	100
LB-75	3/4"	10	50	LBLA-75	3/4"	10	50
LB-100	1"	5	25	LBLA-100	1"	5	25
LB-125	1-1/4"	2	10	LBLA-125	1-1/4"	2	10
LB-150	1-1/2"	2	10	LBLA-150	1-1/2"	2	10
LB-200	2"	1	5	LBLA-200	2"	1	5
LB-250	2-1/2"	N/A	1	LBLA-250	2-1/2"	N/A	1
LB-300	3"	N/A	1	LBLA-300	3"	N/A	1
LB-350	3-1/2"	N/A	1	LBLA-350	3-1/2"	N/A	1
LB-400	4"	N/A	1	LBLA-400	4"	N/A	1

RIGID CONDUIT BODIES LR-TYPE

Allows access for inspection, pulling and maintenance



Material: Aluminum

Certifications: UL Listed, CSA Listed

Features: Threaded body for Rigid/IMC conduit



STANDARD				W/COVER & GASKET			
ITEM#	TRADE SIZE	INNER QTY	MSTR. QTY	ITEM#	TRADE SIZE	INNER QTY	MSTR. QTY
LR-50	1/2"	10	100	LRLA-50	1/2"	10	100
LR-75	3/4"	10	50	LRLA-75	3/4"	10	50
LR-100	1"	5	25	LRLA-100	1"	5	25
LR-125	1-1/4"	2	10	LRLA-125	1-1/4"	2	10
LR-150	1-1/2"	2	10	LRLA-150	1-1/2"	2	10
LR-200	2"	1	5	LRLA-200	2"	1	5
LR-250	2-1/2"	N/A	1	LRLA-250	2-1/2"	N/A	1
LR-300	3"	N/A	1	LRLA-300	3"	N/A	1
LR-350	3-1/2"	N/A	1	LRLA-350	3-1/2"	N/A	1
LR-400	4"	N/A	1	LRLA-400	4"	N/A	1

RIGID CONDUIT BODIES T-TYPE

Allows access for inspection, pulling and maintenance

Material: Aluminum

Certifications: UL Listed, CSA Listed

Features: Threaded body for Rigid/IMC conduit



STANDARD				W/COVER & GASKET			
ITEM#	TRADE SIZE	INNER QTY	MSTR. QTY	ITEM#	TRADE SIZE	INNER QTY	MSTR. QTY
LT-50	1/2"	10	100	LTLA-50	1/2"	10	100
LT-75	3/4"	10	50	LTLA-75	3/4"	10	50
LT-100	1"	5	25	LTLA-100	1"	5	25
LT-125	1-1/4"	2	10	LTLA-125	1-1/4"	2	10
LT-150	1-1/2"	2	10	LTLA-150	1-1/2"	2	10
LT-200	2"	N/A	2	LTLA-200	2"	N/A	2
LT-250	2-1/2"	N/A	1	LTLA-250	2-1/2"	N/A	1
LT-300	3"	N/A	1	LTLA-300	3"	N/A	1
LT-350	3-1/2"	N/A	1	LTLA-350	3-1/2"	N/A	1
LT-400	4"	N/A	1	LTLA-400	4"	N/A	1

RIGID CONDUIT BODIES C-TYPE - MALLEABLE

Allows access for inspection, pulling and maintenance

Material: Malleable Iron

Certifications: UL Listed, CSA Listed, NEMA FB-1

Features: Threaded body for Rigid/IMC conduit



ITEM#	TRADE SIZE	INNER QTY	MSTR. QTY	ITEM#	TRADE SIZE	INNER QTY	MSTR. QTY
LCM-50	1/2"	N/A	10	LCM-200	2"	N/A	5
LCM-75	3/4"	N/A	10	LCM-250	2-1/2"	N/A	1
LCM-100	1"	N/A	5	LCM-300	3"	N/A	1
LCM-125	1-1/4"	N/A	5	LCM-350	3-1/2"	N/A	1
LCM-150	1-1/2"	N/A	5	LCM-400	4"	N/A	1

RIGID CONDUIT BODIES LB-TYPE - MALLEABLE

Allows access for inspection, pulling and maintenance

Material: Malleable Iron

Certifications: UL Listed, CSA Listed

Features: Threaded body for Rigid/IMC conduit



ITEM#	TRADE SIZE	INNER QTY	MSTR. QTY	ITEM#	TRADE SIZE	INNER QTY	MSTR. QTY
LBM-50	1/2"	N/A	10	LBM-200	2"	N/A	5
LBM-75	3/4"	N/A	10	LBM-250	2-1/2"	N/A	1
LBM-100	1"	N/A	5	LBM-300	3"	N/A	1
LBM-125	1-1/4"	N/A	5	LBM-350	3-1/2"	N/A	1
LBM-150	1-1/2"	N/A	5	LBM-400	4"	N/A	1

RIGID CONDUIT BODIES LL-TYPE - MALLEABLE

Allows access for inspection, pulling and maintenance

Material: Malleable Iron

Certifications: UL Listed, CSA Listed, NEMA FB-1

Features: Threaded body for Rigid/IMC conduit



ITEM#	TRADE SIZE	INNER QTY	MSTR. QTY	ITEM#	TRADE SIZE	INNER QTY	MSTR. QTY
LLM-50	1/2"	N/A	10	LLM-200	2"	N/A	5
LLM-75	3/4"	N/A	10	LLM-250	2-1/2"	N/A	1
LLM-100	1"	N/A	5	LLM-300	3"	N/A	1
LLM-125	1-1/4"	N/A	5	LLM-350	3-1/2"	N/A	1
LLM-150	1-1/2"	N/A	5	LLM-400	4"	N/A	1

RIGID CONDUIT BODIES LR-TYPE - MALLEABLE

Allows access for inspection, pulling and maintenance

Material: Malleable Iron

Certifications: UL Listed, CSA Listed, NEMA FB-1

Features: Threaded body for Rigid/IMC conduit



ITEM#	TRADE SIZE	INNER QTY	MSTR. QTY	ITEM#	TRADE SIZE	INNER QTY	MSTR. QTY
LRM-50	1/2"	N/A	10	LRM-200	2"	N/A	5
LRM-75	3/4"	N/A	10	LRM-250	2-1/2"	N/A	1
LRM-100	1"	N/A	5	LRM-300	3"	N/A	1
LRM-125	1-1/4"	N/A	5	LRM-350	3-1/2"	N/A	1
LRM-150	1-1/2"	N/A	5	LRM-400	4"	N/A	1

RIGID CONDUIT BODIES T-TYPE - MALLEABLE

Allows access for inspection, pulling and maintenance

Material: Malleable Iron

Certifications: UL Listed, CSA Listed, NEMA FB-1

Features: Threaded body for Rigid/IMC conduit



ITEM#	TRADE SIZE	INNER QTY	MSTR. QTY	ITEM#	TRADE SIZE	INNER QTY	MSTR. QTY
LTM-50	1/2"	N/A	10	LTM-200	2"	N/A	5
LTM-75	3/4"	N/A	10	LTM-250	2-1/2"	N/A	1
LTM-100	1"	N/A	5	LTM-300	3"	N/A	1
LTM-125	1-1/4"	N/A	5	LTM-350	3-1/2"	N/A	1
LTM-150	1-1/2"	N/A	5	LTM-400	4"	N/A	1

RIGID CONDUIT BODIES TB-TYPE - MALLEABLE

Allows access for inspection, pulling and maintenance

Material: Malleable Iron

Certifications: cULus Listed, NEMA FB-1

Features: Threaded body for Rigid/IMC conduit



ITEM#	TRADE SIZE	INNER QTY	MSTR. QTY	ITEM#	TRADE SIZE	INNER QTY	MSTR. QTY
LTBM-50	1/2"	N/A	10	LTBM-125	1-1/4"	N/A	5
LTBM-75	3/4"	N/A	10	LTBM-150	1-1/2"	N/A	5
LTBM-100	1"	N/A	5	LTBM-200	2"	N/A	5

EMT SET SCREW CONDUIT BODIES LR-TYPE

Allows access for inspection, pulling and maintenance

Material: Aluminum

Certifications: UL Listed, CSA Listed

Features: Threadless body with set screws for EMT conduit



ITEM#	TRADE SIZE	INNER QTY	MSTR. QTY	ITEM#	TRADE SIZE	INNER QTY	MSTR. QTY
LRE-50	1/2"	10	100	LRE-125	1-1/4"	2	10
LRE-75	3/4"	10	50	LRE-150	1-1/2"	2	10
LRE-100	1"	5	25	LRE-200	2"	1	5

EMT SET SCREW CONDUIT BODIES LC-TYPE

Allows access for inspection, pulling and maintenance

Material: Aluminum

Certifications: UL Listed, CSA Listed

Features: Threadless body with set screws for EMT conduit



ITEM#	TRADE SIZE	INNER QTY	MSTR. QTY	ITEM#	TRADE SIZE	INNER QTY	MSTR. QTY
LCE-50	1/2"	10	100	LCE-125	1-1/4"	2	10
LCE-75	3/4"	10	50	LCE-150	1-1/2"	2	10
LCE-100	1"	5	25	LCE-200	2"	1	5

EMT SET SCREW CONDUIT BODIES T-TYPE

Allows access for inspection, pulling and maintenance

Material: Aluminum

Certifications: UL Listed, CSA Listed

Features: Threadless body with set screws for EMT conduit



ITEM#	TRADE SIZE	INNER QTY	MSTR. QTY	ITEM#	TRADE SIZE	INNER QTY	MSTR. QTY
LTE-50	1/2"	10	100	LTE-125	1-1/4"	2	10
LTE-75	3/4"	10	50	LTE-150	1-1/2"	2	10
LTE-100	1"	5	25	LTE-200	2"	0	2

EMT SET SCREW CONDUIT BODIES LB-TYPE

Allows access for inspection, pulling and maintenance

Material: Aluminum

Certifications: UL Listed, CSA Listed

Features: Threadless body with set screws for EMT conduit



ITEM#	TRADE SIZE	INNER QTY	MSTR. QTY	ITEM#	TRADE SIZE	INNER QTY	MSTR. QTY
LBE-50	1/2"	10	100	LBE-125	1-1/4"	2	10
LBE-75	3/4"	10	50	LBE-150	1-1/2"	2	10
LBE-100	1"	5	25	LBE-200	2"	1	5

COMBINATION CONDUIT BODIES C-TYPE

Allows access for inspection, pulling and maintenance

Material: Aluminum

Certifications: UL Listed, CSA Listed

Features: Threaded body for Rigid/IMC conduit, and set screws for EMT conduit



STANDARD				W/COVER & GASKET			
ITEM#	TRADE SIZE	INNER QTY	MSTR. QTY	ITEM#	TRADE SIZE	INNER QTY	MSTR. QTY
LC-50-CB	1/2"	10	100	LCLA-50-CB	1/2"	10	100
LC-75-CB	3/4"	10	50	LCLA-75-CB	3/4"	10	50
LC-100-CB	1"	5	25	LCLA-100-CB	1"	5	25
LC-125-CB	1-1/4"	2	10	LCLA-125-CB	1-1/4"	2	10
LC-150-CB	1-1/2"	2	10	LCLA-150-CB	1-1/2"	2	10
LC-200-CB	2"	1	5	LCLA-200-CB	2"	1	5

EMT SET SCREW CONDUIT BODIES LL-TYPE

Allows access for inspection, pulling and maintenance

Material: Aluminum

Certifications: UL Listed, CSA Listed



ITEM#	TRADE SIZE	INNER QTY	MSTR. QTY	ITEM#	TRADE SIZE	INNER QTY	MSTR. QTY
LLE-50	1/2"	10	100	LLE-125	1-1/4"	2	10
LLE-75	3/4"	10	50	LLE-150	1-1/2"	2	10
LLE-100	1"	5	25	LLE-200	2"	1	5

COMBINATION CONDUIT BODIES LB-TYPE

Allows access for inspection, pulling and maintenance



Material: Aluminum

Certifications: UL Listed & CSA Listed (Standard)
cULus Listed (w/Cover & Gasket)



Features: Threaded body for Rigid/IMC conduit, and set screws for EMT conduit



STANDARD				W/COVER & GASKET			
ITEM#	TRADE SIZE	INNER QTY	MSTR. QTY	ITEM#	TRADE SIZE	INNER QTY	MSTR. QTY
LB-50-CB	1/2"	10	100	LBLA-50-CB	1/2"	10	100
LB-75-CB	3/4"	10	50	LBLA-75-CB	3/4"	10	50
LB-100-CB	1"	5	25	LBLA-100-CB	1"	5	25
LB-125-CB	1-1/4"	2	10	LBLA-125-CB	1-1/4"	2	10
LB-150-CB	1-1/2"	2	10	LBLA-150-CB	1-1/2"	2	10
LB-200-CB	2"	1	5	LBLA-200-CB	2"	1	5

COMBINATION CONDUIT BODIES LL-TYPE

Allows access for inspection, pulling and maintenance



Material: Aluminum

Certifications: UL Listed & CSA Listed (Standard)
cULus Listed (w/Cover & Gasket)



Features: Threaded body for Rigid/IMC conduit, and set screws for EMT conduit



STANDARD				W/COVER & GASKET			
ITEM#	TRADE SIZE	INNER QTY	MSTR. QTY	ITEM#	TRADE SIZE	INNER QTY	MSTR. QTY
LL-50-CB	1/2"	10	100	LLLA-50-CB	1/2"	10	100
LL-75-CB	3/4"	10	50	LLLA-75-CB	3/4"	10	50
LL-100-CB	1"	5	25	LLLA-100-CB	1"	5	25
LL-125-CB	1-1/4"	2	10	LLLA-125-CB	1-1/4"	2	10
LL-150-CB	1-1/2"	2	10	LLLA-150-CB	1-1/2"	2	10
LL-200-CB	2"	1	5	LLLA-200-CB	2"	1	5

COMBINATION CONDUIT BODIES LR-TYPE

Allows access for inspection, pulling and maintenance



Material: Aluminum

Certifications: UL Listed & CSA Listed (Standard)
cULus Listed (w/Cover & Gasket)



Features: Threaded body for Rigid/IMC conduit, and set screws for EMT conduit



STANDARD				W/COVER & GASKET			
ITEM#	TRADE SIZE	INNER QTY	MSTR. QTY	ITEM#	TRADE SIZE	INNER QTY	MSTR. QTY
LR-50-CB	1/2"	10	100	LRLA-50-CB	1/2"	10	100
LR-75-CB	3/4"	10	50	LRLA-75-CB	3/4"	10	50
LR-100-CB	1"	5	25	LRLA-100-CB	1"	5	25
LR-125-CB	1-1/4"	2	10	LRLA-125-CB	1-1/4"	2	10
LR-150-CB	1-1/2"	2	10	LRLA-150-CB	1-1/2"	2	10
LR-200-CB	2"	1	5	LRLA-200-CB	2"	1	5

COMBINATION CONDUIT BODIES T-TYPE

Allows access for inspection, pulling and maintenance



Material: Aluminum

Certifications: UL Listed & CSA Listed (Standard)
cULus Listed (w/Cover & Gasket)



Features: Threaded body for Rigid/IMC conduit, and set screws for EMT conduit



STANDARD				W/COVER & GASKET			
ITEM#	TRADE SIZE	INNER QTY	MSTR. QTY	ITEM#	TRADE SIZE	INNER QTY	MSTR. QTY
LT-50-CB	1/2"	10	100	LTLA-50-CB	1/2"	10	100
LT-75-CB	3/4"	10	50	LTLA-75-CB	3/4"	10	50
LT-100-CB	1"	5	25	LTLA-100-CB	1"	5	25
LT-125-CB	1-1/4"	2	10	LTLA-125-CB	1-1/4"	2	10
LT-150-CB	1-1/2"	2	10	LTLA-150-CB	1-1/2"	2	10
LT-200-CB	2"	1	5	LTLA-200-CB	2"	1	5

PVC CONDUIT BODIES C-TYPE

Allows access for inspection, pulling and maintenance



Material: PVC

Certifications: UL Listed for wet location and concrete-tight, CSA Listed

Features: Cover, gasket and screws included
Notes: Schedule 40



ITEM#	TRADE SIZE	INNER QTY	MSTR. QTY	ITEM#	TRADE SIZE	INNER QTY	MSTR. QTY
PCLA-50	1/2"	N/A	30	PCLA-200	2"	N/A	15
PCLA-75	3/4"	N/A	20	PCLA-250	2-1/2"	N/A	4
PCLA-100	1"	N/A	15	PCLA-300	3"	N/A	4
PCLA-125	1-1/4"	N/A	15	PCLA-350	3-1/2"	N/A	4
PCLA-150	1-1/2"	N/A	10	PCLA-400	4"	N/A	4

PVC CONDUIT BODIES E-TYPE

Allows access for inspection, pulling and maintenance



Material: PVC

Certifications: UL Listed for wet location and concrete-tight, CSA Listed

Features: Cover, gasket and screws included

Notes: Schedule 40



ITEM#	TRADE SIZE	INNER QTY	MSTR. QTY	ITEM#	TRADE SIZE	INNER QTY	MSTR. QTY
PELA-50	1/2"	N/A	30	PELA-200	2"	N/A	15
PELA-75	3/4"	N/A	20	PELA-250	2-1/2"	N/A	4
PELA-100	1"	N/A	15	PELA-300	3"	N/A	4
PELA-125	1-1/4"	N/A	20	PELA-350	3-1/2"	N/A	4
PELA-150	1-1/2"	N/A	10	PELA-400	4"	N/A	4

PVC CONDUIT BODIES LB-TYPE

Allows access for inspection, pulling and maintenance



Material: PVC

Certifications: UL Listed for wet location and concrete-tight, CSA Listed

Features: Cover, gasket and screws included

Notes: Schedule 40



ITEM#	TRADE SIZE	INNER QTY	MSTR. QTY	ITEM#	TRADE SIZE	INNER QTY	MSTR. QTY
PLBLA-50	1/2"	N/A	25	PLBLA-200	2"	N/A	10
PLBLA-75	3/4"	N/A	15	PLBLA-250	2-1/2"	N/A	4
PLBLA-100	1"	N/A	10	PLBLA-300	3"	N/A	4
PLBLA-125	1-1/4"	N/A	10	PLBLA-350	3-1/2"	N/A	4
PLBLA-150	1-1/2"	N/A	10	PLBLA-400	4"	N/A	4

PVC CONDUIT BODIES LL-TYPE

Allows access for inspection, pulling and maintenance



Material: PVC

Certifications: UL Listed for wet location and concrete-tight, CSA Listed

Features: Cover, gasket and screws included

Notes: Schedule 40



ITEM#	TRADE SIZE	INNER QTY	MSTR. QTY	ITEM#	TRADE SIZE	INNER QTY	MSTR. QTY
PLLLA-50	1/2"	N/A	25	PLLLA-200	2"	N/A	10
PLLLA-75	3/4"	N/A	20	PLLLA-250	2-1/2"	N/A	4
PLLLA-100	1"	N/A	15	PLLLA-300	3"	N/A	4
PLLLA-125	1-1/4"	N/A	10	PLLLA-350	3-1/2"	N/A	5
PLLLA-150	1-1/2"	N/A	10	PLLLA-400	4"	N/A	5

PVC CONDUIT BODIES LR-TYPE

Allows access for inspection, pulling and maintenance



Material: PVC

Certifications: UL Listed for wet location and concrete-tight, CSA Listed

Features: Cover, gasket and screws included

Notes: Schedule 40



ITEM#	TRADE SIZE	INNER QTY	MSTR. QTY	ITEM#	TRADE SIZE	INNER QTY	MSTR. QTY
PLRLA-50	1/2"	N/A	25	PLRLA-200	2"	N/A	10
PLRLA-75	3/4"	N/A	20	PLRLA-250	2-1/2"	N/A	4
PLRLA-100	1"	N/A	15	PLRLA-300	3"	N/A	4
PLRLA-125	1-1/4"	N/A	10	PLRLA-350	3-1/2"	N/A	5
PLRLA-150	1-1/2"	N/A	10	PLRLA-400	4"	N/A	5

PVC CONDUIT BODIES T-TYPE

Allows access for inspection, pulling and maintenance



Material: PVC

Certifications: UL Listed for wet location and concrete-tight, CSA Listed

Features: Cover, gasket and screws included

Notes: Schedule 40



ITEM#	TRADE SIZE	INNER QTY	MSTR. QTY	ITEM#	TRADE SIZE	INNER QTY	MSTR. QTY
PTLA-50	1/2"	N/A	10	PTLA-200	2"	N/A	10
PTLA-75	3/4"	N/A	10	PTLA-250	2-1/2"	N/A	4
PTLA-100	1"	N/A	10	PTLA-300	3"	N/A	4
PTLA-125	1-1/4"	N/A	15	PTLA-350	3-1/2"	N/A	4
PTLA-150	1-1/2"	N/A	10	PTLA-400	4"	N/A	4

SERVICE ENTRANCE BODIES

Allows access for inspection, pulling and maintenance



Material: Cast Aluminum

Certifications: UL Listed, CSA Listed

Features: Flush mount to structure

Notes: XL suffix for extra long



ITEM#	TRADE SIZE	INNER QTY	MSTR. QTY	ITEM#	TRADE SIZE	INNER QTY	MSTR. QTY
L-900	1/2"	10	50	L-904	1-1/2"	1	5
L-901	3/4"	10	50	L-905	2"	1	5
L-902	1"	5	25	L-903-XL	1-1/4"	2	10
L-903	1-1/4"	2	10	L-905-XL	2"	1	5

CONDUIT BODY COVERS STEEL

Encloses conduit bodies

Material: Steel

Certifications: UL Listed, NEMA FB-1 (Domed only)

Notes: Screws included (except with LS-250)



STANDARD				DOMED			
ITEM#	TRADE SIZE	INNER QTY	MSTR. QTY	ITEM#	TRADE SIZE	INNER QTY	MSTR. QTY
LS-50	1/2"	N/A	50	LS-50-D	1/2"	N/A	50
LS-75	3/4"	N/A	50	LS-75-D	3/4"	N/A	50
LS-100	1"	N/A	50	LS-100-D	1"	N/A	50
LS-125	1-1/4"-1-1/2"	N/A	50	LS-125-D	1-1/4"-1-1/2"	N/A	50
LS-200	2"	N/A	25	LS-200-D	2"	N/A	25
LS-250	2-1/2"	N/A	25	LS-250-D	2-1/2"-3"	N/A	10
				LS-350-D	3-1/2"-4"	N/A	5

CONDUIT BODY COVERS ALUMINUM

Encloses conduit bodies

Material: Aluminum

Certifications: UL Listed

Notes: Screws included



ITEM#	TRADE SIZE	INNER QTY	MSTR. QTY	ITEM#	TRADE SIZE	INNER QTY	MSTR. QTY
LA-50	1/2"	N/A	50	LA-200	2"	N/A	25
LA-75	3/4"	N/A	50	LA-250	2-1/2"-3"	N/A	10
LA-100	1"	N/A	50	LA-350	3-1/2"-4"	N/A	5
LA-125	1-1/4"-1-1/2"	N/A	50				

CONDUIT BODY COVERS MALLEABLE

Encloses malleable iron conduit bodies

Material: Malleable Iron

Certifications: cULus Listed, Federal Spec. W-C-586D, NEMA: FB-1

Notes: Stainless steel captive crews included. 2-1/2" - 4" with raised dome for additional wiring room.



ITEM#	TRADE SIZE	INNER QTY	MASTER QTY
LM-50	1/2"	N/A	50
LM-75	3/4"	N/A	50
LM-100	1"	N/A	50
LM-125150	1-1/4"-1-1/2"	N/A	50
LM-200	2"	N/A	25
LM-250300	2-1/2"-3"	N/A	10
LM-350400	3-1/2"-4"	N/A	5

FIBER GASKETS

Provides dust-tight seal between conduit body and cover

Material: Fiber



ITEM#	TRADE SIZE	INNER QTY	MSTR. QTY	ITEM#	TRADE SIZE	INNER QTY	MSTR. QTY
LF-50	1/2"	100	1000	LF-200	2"	25	125
LF-75	3/4"	100	1000	LF-250	2-1/2"-3"	10	50
LF-100	1"	50	500	LF-350	3-1/2"-4"	N/A	10
LF-125	1-1/4"-1-1/2"	25	125				

NEOPRENE GASKETS

Provides dust and rain-tight seal between conduit body and cover

Material: Neoprene Rubber



ITEM#	TRADE SIZE	INNER QTY	MSTR. QTY	ITEM#	TRADE SIZE	INNER QTY	MSTR. QTY
LFN-50	1/2"	100	1000	LFN-200	2"	25	125
LFN-75	3/4"	100	1000	LFN-250	2-1/2"-3"	10	50
LFN-100	1"	50	500	LFN-350	3-1/2"-4"	N/A	10
LFN-125	1-1/4"-1-1/2"	50	500				

ME EXCLUSIVE SMART LB CONDUIT BODIES

For ease of installation of Optical Fiber Cable

Material: Die Cast Aluminum or Molded PVC

Certifications: CSA US Listed

Features: For use with EMT, IMC, Rigid conduit or LT Flexible conduit & fittings. Suitable for indoor/outdoor (OSP) & plenum use. Built in radius helps prevent cables from getting damaged. Includes gasketed cover for wet locations. Meets minum bend radius of ANSI/TIA/EIA 568 & NECA/FOA. Recommended by BICSI TDMM 13th for communication cable.



DIE CAST ALUMINUM				PVC			
ITEM#	TRADE SIZE	INNER QTY	MSTR. QTY	ITEM#	TRADE SIZE	INNER QTY	MSTR. QTY
KBLB120	1-1/4"	N/A	20	KBLB121	1-1/4"	N/A	20
KBLB250	2-1/2"	N/A	4	KBLB251	2-1/2"	N/A	4
KBLB400	4"	N/A	2	KBLB401	4"	N/A	2

ME EXCLUSIVE EZLB SERVICE ENTRANCE CONDUIT BODY

For ease of Service Entrance wire

Material: Molded PVC

Certifications: UL Listed

Features: Patented 3 Piece design allows plenty of room to maneuver wire into place. Split body design eliminates pinch points. Design allows easy installation and eliminates wire damage. Includes 2" collar to connect to PVC conduit. Includes gasket for wet locations.



ITEM#	TRADE SIZE	INNER QTY	MASTER QTY
EZLB200	2"	N/A	2

FORM 7 RIGID CONDUIT BODIES C-TYPE THREADED

Provides access to conductors for pulling, splicing and maintenance.

Material: Gray Iron, zinc plated w/aluminum enamel paint

Certifications: cULus Listed, Federal Spec. W-C-586D, NEMA: FB-1

Features: Tapered threaded hubs - NPT. Suitable for use in concrete.



ITEM#	TRADE SIZE	INNER QTY	MASTER QTY
M7C17	1/2"	N/A	5
M7C27	3/4"	N/A	5
M7C37	1"	N/A	5
M7C47	1 1/4"	N/A	2
M7C57	1 1/2"	N/A	2
M7C67	2"	N/A	2
M7C77	2 1/2"	N/A	1
M7C87	3"	N/A	1

FORM 7 RIGID CONDUIT BODIES LB-TYPE THREADED

Provides access to conductors for pulling, splicing and maintenance.

Material: Gray Iron, zinc plated w/aluminum enamel paint

Certifications: cULus Listed, Federal Spec. W-C-586D, NEMA: FB-1

Features: Tapered threaded hubs - NPT. Suitable for use in concrete.



ITEM#	TRADE SIZE	INNER QTY	MASTER QTY
M7LB17	1/2"	N/A	5
M7LB27	3/4"	N/A	5
M7LB37	1"	N/A	5
M7LB47	1 1/4"	N/A	2
M7LB57	1 1/2"	N/A	2
M7LB67	2"	N/A	2
M7LB77	2 1/2"	N/A	1
M7LB87	3"	N/A	1
M7LB97	3 1/2"	N/A	1
M7LB107	4"	N/A	1

FORM 7 RIGID CONDUIT BODIES LL-TYPE THREADED

Provides access to conductors for pulling, splicing and maintenance.

Material: Gray Iron, zinc plated w/aluminum enamel paint

Certifications: cULus Listed, Federal Spec. W-C-586D, NEMA: FB-1

Features: Tapered threaded hubs - NPT. Suitable for use in concrete.



ITEM#	TRADE SIZE	INNER QTY	MASTER QTY
M7LL17	1/2"	N/A	5
M7LL27	3/4"	N/A	5
M7LL37	1"	N/A	5
M7LL47	1 1/4"	N/A	2
M7LL57	1 1/2"	N/A	2
M7LL67	2"	N/A	2

FORM 7 RIGID CONDUIT BODIES LR-TYPE THREADED

Provides access to conductors for pulling, splicing and maintenance.

Material: Gray Iron, zinc plated w/aluminum enamel paint

Certifications: cULus Listed, Federal Spec. W-C-586D, NEMA: FB-1

Features: Tapered threaded hubs - NPT. Suitable for use in concrete.



ITEM#	TRADE SIZE	INNER QTY	MASTER QTY
M7LR17	1/2"	N/A	5
M7LR27	3/4"	N/A	5
M7LR37	1"	N/A	5
M7LR47	1 1/4"	N/A	2
M7LR57	1 1/2"	N/A	2
M7LR67	2"	N/A	2

FORM 7 RIGID CONDUIT BODIES T-TYPE THREADED

Provides access to conductors for pulling, splicing and maintenance.

Material: Gray Iron, zinc plated w/aluminum enamel paint

Certifications: cULus Listed, Federal Spec. W-C-586D, NEMA: FB-1

Features: Tapered threaded hubs - NPT. Suitable for use in concrete.



ITEM#	TRADE SIZE	INNER QTY	MASTER QTY
M7T17	1/2"	N/A	5
M7T27	3/4"	N/A	5
M7T37	1"	N/A	2
M7T47	1 1/4"	N/A	2
M7T57	1 1/2"	N/A	2
M7T67	2"	N/A	2

FORM 7 CAST IRON CONDUIT BODY COVER & GASKETS

Covers conduit body opening.

Material: Gray iron, Neoprene rubber

Certifications: cULus Listed,
Federal Spec. W-C-586D, NEMA: FB-1

Features: Raised dome for additional wiring room.
Stainless steel captive crews included.



ITEM#	TRADE SIZE	INNER QTY	MASTER QTY
M7170F-CG	1/2"	N/A	20
M7270F-CG	3/4"	N/A	20
M7370F-CG	1"	N/A	10
M7470F-CG	1 1/4"	N/A	5
M7570F-CG	1 1/2"	N/A	5
M7670F-CG	2"	N/A	5
M7870F-CG	2 1/2" - 3"	N/A	5
M7970F-CG	3 1/2" - 4"	N/A	5

FORM 7 STEEL CONDUIT BODY COVER & GASKETS

Covers conduit body opening.

Material: Steel, Neoprene rubber

Certifications: cULus Listed,
Federal Spec. W-C-586D, NEMA: FB-1

Features: Raised dome for additional wiring room.
Stainless steel captive crews included.



ITEM#	TRADE SIZE	INNER QTY	MASTER QTY
M7170-CG	1/2"	N/A	25
M7270-CG	3/4"	N/A	25
M7370-CG	1"	N/A	20
M7470-CG	1 1/4"	N/A	10
M7570-CG	1 1/2"	N/A	10
M7670-CG	2"	N/A	10
M7870-CG	2 1/2" - 3"	N/A	5
M7970-CG	3 1/2" - 4"	N/A	5

EZLB

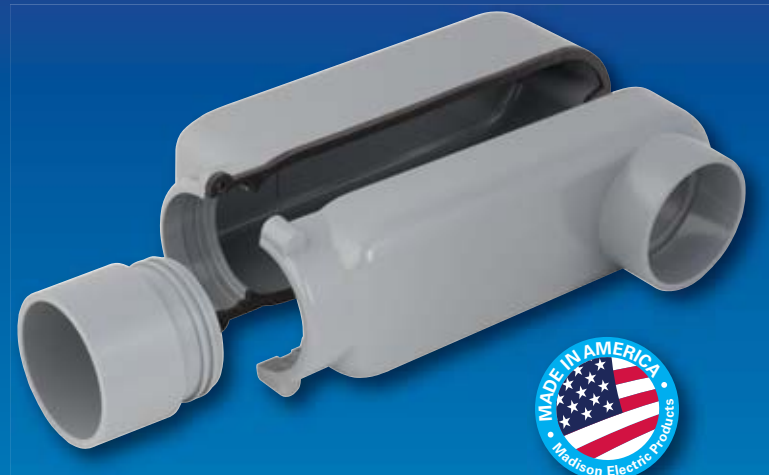
EZ as 1-2-3!

Madison's EZLB provides the most efficient method of installing large service entrance wire through a right angle opening. No more struggling to force the wire into a tight connection. Our patented 3-piece design allows the installer plenty of room to maneuver the wire into place. Splitting the EZLB in half has eliminated the pinch points that has caused electricians problems for decades. The EZLB is a one man installation saving time, money, and eliminating wire damage.

- Ideal for service entrance
- 3-piece design for easy installation
- Includes gasket for wet locations

The EZLB installs in just three simple steps:

1. Install the collar fitting onto 2" PVC pipe.
2. Bend wire at 90 degrees and install into the back half of the EZLB.
3. Finish by installing the front cover.



SEE PG 51

