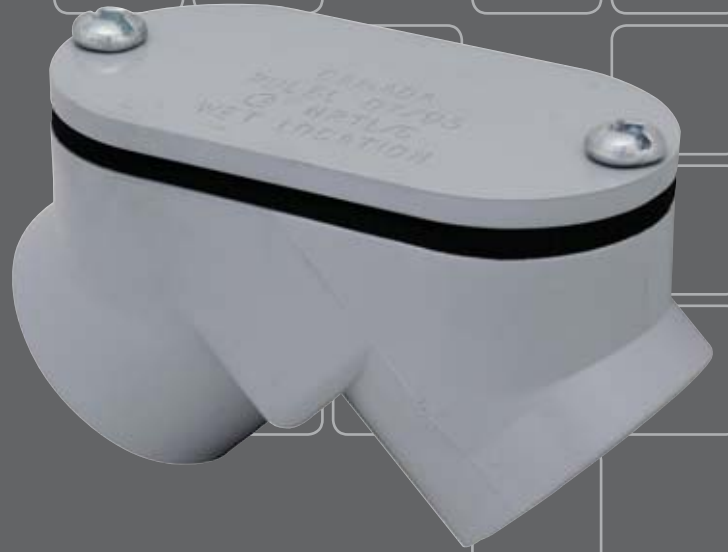


38

pvc fittings



Not all PVC fittings are created equal. Use Madison's PVC fittings once and you will understand why. Made from quality materials and UL tested, our PVC fittings perform every time. With a wide array of products, Madison has the size and shape you need. No matter what the project is, choose Madison PVC fittings for superiority and affordability.



ME

PVC EXPANSION JOINTS

Allows for expansion and contraction in PVC conduit runs



Material: PVC

Certifications: UL Listed, CSA Listed

Notes: Schedule 40



ITEM#	TRADE SIZE	MAX LENGTH	MIN LENGTH	INNER QTY	MASTER QTY
PEJ-50	1/2"	12"	8"	N/A	25
PEJ-75	3/4"	12"	8"	N/A	25
PEJ-100	1"	12-1/2"	8-1/2"	N/A	40
PEJ-125	1-1/4"	13"	9"	N/A	20
PEJ-150	1-1/2"	13"	9"	N/A	20
PEJ-200	2"	13-1/4"	9-1/4"	N/A	10
PEJ-250	2-1/2"	22-1/4"	14-1/4"	N/A	9
PEJ-300	3"	22-1/4"	14-1/4"	N/A	9
PEJ-350	3-1/2"	22-7/8"	14-7/8"	N/A	5
PEJ-400	4"	22-7/8"	14-7/8"	N/A	5
PEJ-500	5"	34"	26"	N/A	1

PVC ELBOWS - 90°

Provides a 90° change in direction in a conduit run



Material: PVC

Certifications: ETL Listed

Features: Schedule 40. Standard radius.



ITEM#	TRADE SIZE	INNER QTY	MSTR. QTY	ITEM#	TRADE SIZE	INNER QTY	MSTR. QTY
PVC-5090	1/2"	N/A	40	PVC-25090	2-1/2"	N/A	1
PVC-7590	3/4"	N/A	40	PVC-30090	3"	N/A	1
PVC-10090	1"	N/A	50	PVC-35090	3-1/2"	N/A	1
PVC-12590	1-1/4"	N/A	25	PVC-40090	4"	N/A	1
PVC-15090	1-1/2"	N/A	20	PVC-50090	5"	N/A	1
PVC-20090	2"	N/A	15	PVC-60090	6"	N/A	1

PVC ELBOWS - 45°

Provides a 45° change in direction in a conduit run



Material: PVC

Certifications: ETL Listed

Features: Schedule 40. Standard radius.



ITEM#	TRADE SIZE	INNER QTY	MSTR. QTY	ITEM#	TRADE SIZE	INNER QTY	MSTR. QTY
PVC-5045	1/2"	N/A	100	PVC-25045	2-1/2"	N/A	20
PVC-7545	3/4"	N/A	50	PVC-30045	3"	N/A	1
PVC-10045	1"	N/A	50	PVC-35045	3-1/2"	N/A	1
PVC-12545	1-1/4"	N/A	35	PVC-40045	4"	N/A	1
PVC-15045	1-1/2"	N/A	20	PVC-50045	5"	N/A	1
PVC-20045	2"	N/A	15	PVC-60045	6"	N/A	1

PVC ELBOWS - 30°

Provides a 30° change in direction in a conduit run



Material: PVC

Certifications: ETL Listed

Features: Schedule 40. Standard radius.



ITEM#	TRADE SIZE	INNER QTY	MSTR. QTY	ITEM#	TRADE SIZE	INNER QTY	MSTR. QTY
PVC-5030	1/2"	N/A	50	PVC-25030	2-1/2"	N/A	20
PVC-7530	3/4"	N/A	50	PVC-30030	3"	N/A	30
PVC-10030	1"	N/A	50	PVC-35030	3-1/2"	N/A	1
PVC-12530	1-1/4"	N/A	35	PVC-40030	4"	N/A	12
PVC-15030	1-1/2"	N/A	20	PVC-50030	5"	N/A	1
PVC-20030	2"	N/A	15	PVC-60030	6"	N/A	1

PVC ELBOWS - 90° SCHEDULE 80

Provides a 90° change in direction in a conduit run



Material: PVC

Certifications: ETL Listed

Features: Schedule 80. Standard radius.



ITEM#	TRADE SIZE	INNER QTY	MSTR. QTY	ITEM#	TRADE SIZE	INNER QTY	MSTR. QTY
PVC-509080	1/2"	N/A	50	PVC-2009080	2"	N/A	15
PVC-759080	3/4"	N/A	40	PVC-2509080	2-1/2"	N/A	1
PVC-1009080	1"	N/A	50	PVC-3009080	3"	N/A	1
PVC-1259080	1-1/4"	N/A	25	PVC-4009080	4"	N/A	1
PVC-1509080	1-1/2"	N/A	20				

PVC ELBOWS - 45° SCHEDULE 80

Provides a 45° change in direction in a conduit run



Material: PVC

Certifications: ETL Listed

Features: Schedule 80. Standard radius.



ITEM#	TRADE SIZE	INNER QTY	MSTR. QTY	ITEM#	TRADE SIZE	INNER QTY	MSTR. QTY
PVC-504580	1/2"	N/A	100	PVC-2004580	2"	N/A	15
PVC-754580	3/4"	N/A	50	PVC-2504580	2-1/2"	N/A	1
PVC-1004580	1"	N/A	50	PVC-3004580	3"	N/A	1
PVC-1254580	1-1/4"	N/A	35	PVC-4004580	4"	N/A	1
PVC-1504580	1-1/2"	N/A	20				

PVC ELBOWS - 90° SCHEDULE 40 SPECIAL RADIUS

Provides a 90° change in direction in a conduit run

Material: PVC

Certifications: ETL Listed

Notes: Special radius elbow orders are non-cancelable and non-returnable



ITEM#	TRADE SIZE	RADIUS	INNER QTY	MASTER QTY
PVC-1509036	1-1/2"	36"	N/A	1
PVC-1509048	1-1/2"	48"	N/A	1
PVC-2009024	2"	24"	N/A	1
PVC-2009036	2"	36"	N/A	1
PVC-2009048	2"	48"	N/A	1
PVC-2509024	2-1/2"	24"	N/A	1
PVC-2509036	2-1/2"	36"	N/A	1
PVC-2509048	2-1/2"	48"	N/A	1
PVC-3009024	3"	24"	N/A	1
PVC-3009036	3"	36"	N/A	1
PVC-3009048	3"	48"	N/A	1
PVC-3509024	3-1/2"	24"	N/A	1
PVC-3509036	3-1/2"	36"	N/A	1
PVC-3509048	3-1/2"	48"	N/A	1
PVC-4009024	4"	24"	N/A	1
PVC-4009036	4"	36"	N/A	1
PVC-4009048	4"	48"	N/A	1
PVC-5009036	5"	36"	N/A	1
PVC-5009048	5"	48"	N/A	1
PVC-6009036	6"	36"	N/A	1
PVC-6009048	6"	48"	N/A	1

PVC ELBOWS - 90° SCHEDULE 80 SPECIAL RADIUS

Provides a 90° change in direction in a conduit run

Material: PVC

Certifications: ETL Listed

Notes: Special radius elbow orders are non-cancelable and non-returnable



ITEM#	TRADE SIZE	RADIUS	INNER QTY	MASTER QTY
PVC-20090248	2"	24"	N/A	1
PVC-20090368	2"	36"	N/A	1
PVC-20090488	2"	48"	N/A	1
PVC-25090248	2-1/2"	24"	N/A	1
PVC-25090368	2-1/2"	36"	N/A	1
PVC-30090248	3"	24"	N/A	1
PVC-30090368	3"	36"	N/A	1
PVC-30090488	3"	48"	N/A	1
PVC-40090248	4"	24"	N/A	1
PVC-40090368	4"	36"	N/A	1
PVC-40090488	4"	48"	N/A	1
PVC-50090488	5"	48"	N/A	1

PVC ELBOWS - 90° BELL END

Provides a 90° change in direction in a conduit run

Material: PVC

Certifications: ETL Listed



ITEM#	TRADE SIZE	INNER QTY	MSTR. QTY	ITEM#	TRADE SIZE	INNER QTY	MSTR. QTY
PVCB-5090	1/2"	N/A	40	PVCB-20090	2"	N/A	15
PVCB-7590	3/4"	N/A	40	PVCB-25090	2-1/2"	N/A	1
PVCB-10090	1"	N/A	40	PVCB-30090	3"	N/A	1
PVCB-12590	1-1/4"	N/A	20	PVCB-35090	3-1/2"	N/A	1
PVCB-15090	1-1/2"	N/A	20	PVCB-40090	4"	N/A	1

PVC ELBOWS - 45° BELL END

Provides a 45° change in direction in a conduit run

Material: PVC

Certifications: ETL Listed



ITEM#	TRADE SIZE	INNER QTY	MSTR. QTY	ITEM#	TRADE SIZE	INNER QTY	MSTR. QTY
PVCB-5045	1/2"	N/A	40	PVCB-20045	2"	N/A	15
PVCB-7545	3/4"	N/A	40	PVCB-25045	2-1/2"	N/A	1
PVCB-10045	1"	N/A	40	PVCB-30045	3"	N/A	1
PVCB-12545	1-1/4"	N/A	20	PVCB-35045	3-1/2"	N/A	1
PVCB-15045	1-1/2"	N/A	20	PVCB-40045	4"	N/A	1

PVC ELBOWS - 90° BELL END SPECIAL RADIUS

Provides a 90° change in direction in a conduit run

Material: PVC

Certifications: ETL Listed

Notes: Special radius elbow orders are non-cancelable and non-returnable



ITEM#	TRADE SIZE	RADIUS	INNER QTY	MASTER QTY
PVCB-2009024	2"	24"	N/A	1
PVCB-2009036	2"	36"	N/A	1
PVCB-2009048	2"	48"	N/A	1
PVCB-2509024	2-1/2"	24"	N/A	1
PVCB-2509036	2-1/2"	36"	N/A	1
PVCB-2509048	2-1/2"	48"	N/A	1
PVCB-3009024	3"	24"	N/A	1
PVCB-3009036	3"	36"	N/A	1
PVCB-3009048	3"	48"	N/A	1
PVCB-3509024	3-1/2"	24"	N/A	1
PVCB-3509036	3-1/2"	36"	N/A	1
PVCB-3509048	3-1/2"	48"	N/A	1
PVCB-4009024	4"	24"	N/A	1
PVCB-4009036	4"	36"	N/A	1
PVCB-4009048	4"	48"	N/A	1

PVC CONDUIT BODIES LB-TYPE

Allows access for inspection, pulling and maintenance



Material: PVC

Certifications: UL Listed for wet location and concrete-tight, CSA Listed

Features: Cover, gasket and screws included

Notes: Schedule 40



ITEM#	TRADE SIZE	INNER QTY	MSTR. QTY	ITEM#	TRADE SIZE	INNER QTY	MSTR. QTY
PLBLA-50	1/2"	N/A	25	PLBLA-200	2"	N/A	10
PLBLA-75	3/4"	N/A	15	PLBLA-250	2-1/2"	N/A	4
PLBLA-100	1"	N/A	10	PLBLA-300	3"	N/A	4
PLBLA-125	1-1/4"	N/A	10	PLBLA-350	3-1/2"	N/A	4
PLBLA-150	1-1/2"	N/A	10	PLBLA-400	4"	N/A	4

PVC CONDUIT BODIES LL-TYPE

Allows access for inspection, pulling and maintenance



Material: PVC

Certifications: UL Listed for wet location and concrete-tight, CSA Listed

Features: Cover, gasket and screws included

Notes: Schedule 40



ITEM#	TRADE SIZE	INNER QTY	MSTR. QTY	ITEM#	TRADE SIZE	INNER QTY	MSTR. QTY
PLLLA-50	1/2"	N/A	25	PLLLA-200	2"	N/A	10
PLLLA-75	3/4"	N/A	20	PLLLA-250	2-1/2"	N/A	4
PLLLA-100	1"	N/A	15	PLLLA-300	3"	N/A	4
PLLLA-125	1-1/4"	N/A	10	PLLLA-350	3-1/2"	N/A	5
PLLLA-150	1-1/2"	N/A	10	PLLLA-400	4"	N/A	5

PVC CONDUIT BODIES C-TYPE

Allows access for inspection, pulling and maintenance



Material: PVC

Certifications: UL Listed for wet location and concrete-tight, CSA Listed

Features: Cover, gasket and screws included

Notes: Schedule 40



ITEM#	TRADE SIZE	INNER QTY	MSTR. QTY	ITEM#	TRADE SIZE	INNER QTY	MSTR. QTY
PCLA-50	1/2"	N/A	30	PCLA-200	2"	N/A	15
PCLA-75	3/4"	N/A	20	PCLA-250	2-1/2"	N/A	4
PCLA-100	1"	N/A	15	PCLA-300	3"	N/A	4
PCLA-125	1-1/4"	N/A	15	PCLA-350	3-1/2"	N/A	4
PCLA-150	1-1/2"	N/A	10	PCLA-400	4"	N/A	4

PVC CONDUIT BODIES LR-TYPE

Allows access for inspection, pulling and maintenance



Material: PVC

Certifications: UL Listed for wet location and concrete-tight, CSA Listed

Features: Cover, gasket and screws included

Notes: Schedule 40



ITEM#	TRADE SIZE	INNER QTY	MSTR. QTY	ITEM#	TRADE SIZE	INNER QTY	MSTR. QTY
PLRLA-50	1/2"	N/A	25	PLRLA-200	2"	N/A	10
PLRLA-75	3/4"	N/A	20	PLRLA-250	2-1/2"	N/A	4
PLRLA-100	1"	N/A	15	PLRLA-300	3"	N/A	4
PLRLA-125	1-1/4"	N/A	10	PLRLA-350	3-1/2"	N/A	5
PLRLA-150	1-1/2"	N/A	10	PLRLA-400	4"	N/A	5

PVC CONDUIT BODIES E-TYPE

Allows access for inspection, pulling and maintenance



Material: PVC

Certifications: UL Listed for wet location and concrete-tight, CSA Listed

Features: Cover, gasket and screws included

Notes: Schedule 40



ITEM#	TRADE SIZE	INNER QTY	MSTR. QTY	ITEM#	TRADE SIZE	INNER QTY	MSTR. QTY
PELA-50	1/2"	N/A	30	PELA-200	2"	N/A	15
PELA-75	3/4"	N/A	20	PELA-250	2-1/2"	N/A	4
PELA-100	1"	N/A	15	PELA-300	3"	N/A	4
PELA-125	1-1/4"	N/A	20	PELA-350	3-1/2"	N/A	4
PELA-150	1-1/2"	N/A	10	PELA-400	4"	N/A	4

PVC CONDUIT BODIES T-TYPE

Allows access for inspection, pulling and maintenance



Material: PVC

Certifications: UL Listed for wet location and concrete-tight, CSA Listed

Features: Cover, gasket and screws included

Notes: Schedule 40



ITEM#	TRADE SIZE	INNER QTY	MSTR. QTY	ITEM#	TRADE SIZE	INNER QTY	MSTR. QTY
PTLA-50	1/2"	N/A	10	PTLA-200	2"	N/A	10
PTLA-75	3/4"	N/A	10	PTLA-250	2-1/2"	N/A	4
PTLA-100	1"	N/A	10	PTLA-300	3"	N/A	4
PTLA-125	1-1/4"	N/A	15	PTLA-350	3-1/2"	N/A	4
PTLA-150	1-1/2"	N/A	10	PTLA-400	4"	N/A	4

PVC PULL ELBOWS

Connects 2 lengths of PVC for a 90° bend

Material: PVC

Certifications: UL Listed, CSA Listed



ITEM#	TRADE SIZE	INNER QTY	MASTER QTY
PEL-5075	1/2", 3/4"	N/A	50

PVC END CAPS

Seals off end of conduit

Material: PVC

Certifications: UL Listed, CSA Listed



ITEM#	TRADE SIZE	INNER QTY	MSTR. QTY	ITEM#	TRADE SIZE	INNER QTY	MSTR. QTY
PEC-50	1/2"	N/A	200	PEC-250	2-1/2"	N/A	15
PEC-75	3/4"	N/A	150	PEC-300	3"	N/A	10
PEC-100	1"	N/A	100	PEC-400	4"	N/A	12
PEC-125	1-1/4"	N/A	40	PEC-500	5"	N/A	10
PEC-150	1-1/2"	N/A	40	PEC-600	6"	N/A	10
PEC-200	2"	N/A	20				

PVC END BELLS

Provides smooth surface for wire pulling at the cut end of the conduit and protects cable from damage

Material: PVC



ITEM#	TRADE SIZE	INNER QTY	MSTR. QTY	ITEM#	TRADE SIZE	INNER QTY	MSTR. QTY
PMEB-50	1/2"	N/A	100	PMEB-250	2-1/2"	N/A	10
PMEB-75	3/4"	N/A	200	PMEB-300	3"	N/A	30
PMEB-100	1"	N/A	100	PMEB-350	3-1/2"	N/A	40
PMEB-125	1-1/4"	N/A	100	PMEB-400	4"	N/A	30
PMEB-150	1-1/2"	N/A	50	PMEB-500	5"	N/A	25
PMEB-200	2"	N/A	40	PMEB-600	6"	N/A	15

PVC COUPLINGS

Connects two lengths of PVC

Material: PVC

Certifications: UL Listed, CSA Listed

Notes: Schedule 40



ITEM#	TRADE SIZE	INNER QTY	MSTR. QTY	ITEM#	TRADE SIZE	INNER QTY	MSTR. QTY
PC-50	1/2"	N/A	150	PC-250	2-1/2"	N/A	15
PC-75	3/4"	N/A	100	PC-300	3"	N/A	25
PC-100	1"	N/A	50	PC-350	3-1/2"	N/A	20
PC-125	1-1/4"	N/A	30	PC-400	4"	N/A	15
PC-150	1-1/2"	N/A	25	PC-500	5"	N/A	8
PC-200	2"	N/A	30	PC-600	6"	N/A	5

PVC REDUCER BUSHINGS

Reduces knockout diameter

Material: PVC

Notes: Schedule 40



ITEM#	TRADE SIZE	INNER QTY	MASTER QTY
PRB-7550	3/4" x 1/2"	100	300
PRB-10050	1" x 1/2"	100	300
PRB-10075	1" X 3/4"	100	200
PRB-12575	1-1/4" x 3/4"	25	50
PRB-125100	1-1/4" x 1"	50	100
PRB-150125	1-1/2" x 1-1/4"	N/A	40
PRB-200125	2" x 1-1/4"	N/A	25
PRB-200150	2" x 1-1/2"	N/A	25
PRB-250200	2-1/2" x 2"	N/A	15
PRB-300200	3" x 2"	N/A	25
PRB-300250	3" x 2-1/2"	N/A	15
PRB-400300	4" x 3"	N/A	10
PRB-400350	4" x 3-1/2"	N/A	15

PVC TERMINAL ADAPTERS

Connects PVC conduit to a threaded PVC or steel conduit bell or terminate raceway to a box or enclosure

Material: PVC

Certifications: UL Listed, CSA Listed

Notes: Schedule 40



ITEM#	TRADE SIZE	INNER QTY	MSTR. QTY	ITEM#	TRADE SIZE	INNER QTY	MSTR. QTY
PTA-50	1/2"	N/A	150	PTA-250	2-1/2"	N/A	25
PTA-75	3/4"	N/A	125	PTA-300	3"	N/A	45
PTA-100	1"	N/A	50	PTA-350	3-1/2"	N/A	30
PTA-125	1-1/4"	N/A	50	PTA-400	4"	N/A	20
PTA-150	1-1/2"	N/A	25	PTA-500	5"	N/A	8
PTA-200	2"	N/A	50	PTA-600	6"	N/A	10

PVC FEMALE ADAPTERS

Connects threaded steel conduit or connectors to PVC conduit

Material: PVC

Certifications: UL Listed, CSA Listed

Notes: Schedule 40.

PFA-250 and PFA-350 concrete-tight when taped.



ITEM#	TRADE SIZE	INNER QTY	MSTR. QTY	ITEM#	TRADE SIZE	INNER QTY	MSTR. QTY
PFA-50	1/2"	N/A	150	PFA-250	2-1/2"	N/A	20
PFA-75	3/4"	N/A	100	PFA-300	3"	N/A	25
PFA-100	1"	N/A	50	PFA-350	3-1/2"	N/A	20
PFA-125	1-1/4"	N/A	30	PFA-400	4"	N/A	15
PFA-150	1-1/2"	N/A	25	PFA-500	5"	N/A	10
PFA-200	2"	N/A	30	PFA-600	6"	N/A	6

PVC OFFSET ADAPTERS

Offsets a conduit raceway

Material: PVC

Certifications: UL Listed, CSA Listed

Notes: Schedule 40



ITEM#	TRADE SIZE	INNER QTY	MASTER QTY
PMO-125	1-1/4"	N/A	50
PMO-200	2"	N/A	25

PVC JUNCTION BOX ADAPTERS

Connects conduit to box or enclosure

Material: PVC

Certifications: UL Listed & , CSA Listed (1/2" thru 2" only)



ITEM#	TRADE SIZE	INNER QTY	MSTR. QTY	ITEM#	TRADE SIZE	INNER QTY	MSTR. QTY
PJBA-50	1/2"	N/A	100	PJBA-200	2"	N/A	25
PJBA-75	3/4"	N/A	100	PJBA-250	2-1/2"	N/A	10
PJBA-100	1"	N/A	100	PJBA-300	3"	N/A	20
PJBA-125	1-1/4"	N/A	50	PJBA-350	3-1/2"	N/A	10
PJBA-150	1-1/2"	N/A	75	PJBA-400	4"	N/A	10

PVC JUNCTION BOXES

Encloses electrical or utility connections

Material: PVC

Certifications: UL Listed, CSA Listed

Features: Cover, gasket and screws included



ITEM#	TRADE SIZE	INNER QTY	MASTER QTY
PJB-442	4" x 4" x 2"	N/A	12
PJB-444	4" x 4" x 4"	N/A	10
PJB-552	5" x 5" x 2"	N/A	12
PJB-664	6" x 6" x 4"	N/A	5
PJB-666	6" x 6" x 6"	N/A	8
PJB-884	8" x 8" x 4"	N/A	5
PJB-887	8" x 8" x 7"	N/A	2
PJB-12124	12" x 12" x 4"	N/A	3
PJB-12126	12" x 12" x 6"	N/A	3
PJB-12128	12" x 12" x 8"	N/A	3

PVC FSC BOXES

Used as a junction box or branch circuit wiring devices

Material: PVC

Certifications: UL Listed, CSA Listed



ITEM#	TRADE SIZE	INNER QTY	MASTER QTY
PFSC-50	1/2"	N/A	15
PFSC-75	3/4"	N/A	15

PVC FSE BOXES

Used as a junction box or branch circuit wiring devices

Material: PVC

Certifications: UL Listed, CSA Listed



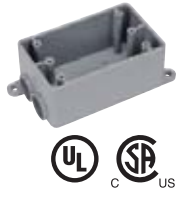
ITEM#	TRADE SIZE	INNER QTY	MASTER QTY
PFSE-50	1/2"	N/A	10
PFSE-75	3/4"	N/A	10

PVC FSS BOXES

Used as a junction box or branch circuit wiring devices

Material: PVC

Certifications: UL Listed, CSA Listed



ITEM#	TRADE SIZE	INNER QTY	MASTER QTY
PFSS-50	1/2"	N/A	10
PFSS-75	3/4"	N/A	10

PVC FS BOXES - 3 IN 1

Used as a junction box or branch circuit wiring devices

Material: PVC

Certifications: UL Listed, CSA Listed

Features: Can be adapted to accommodate three sizes of conduit (1/2", 3/4", 1") in one box. Standard 1" hub which can be adjusted to 3/4" or 1/2" using supplied reducer bushings.



ITEM#	TRADE SIZE	INNER QTY	MSTR. QTY	ITEM#	TRADE SIZE	INNER QTY	MSTR. QTY
PFSC-3	2 GANG	N/A	10	PFSE-3	2 GANG	N/A	10
PFSCC-3	2 GANG	N/A	10	PFSED-3	1 GANG	N/A	10
PFSCD-3	1 GANG	N/A	10	PFSS-3	2 GANG	N/A	10

PVC OCTAGON BOXES

Junction box

Material: PVC

Certifications: UL Listed, CSA Listed

Notes: 1/2" and 3/4" hub. Not designed for supporting luminaires



ITEM#	TRADE SIZE	INNER QTY	MASTER QTY
POCT-400150	4 x 1-1/2"	N/A	15

PVC FITTINGS

PVC COVER PLATES

Covers wiring devices inside box after installation



Material: PVC

Certifications: UL Listed (all), CSA Listed (PDSC, PGFSC, PTSC)



ITEM#	TRADE SIZE	COVER	INNER QTY	MASTER QTY
PBDC	2 GANG	BLANK W/GASKET	N/A	20
PBSC	1 GANG	BLANK	N/A	50
PBSC-2	2 GANG	BLANK	N/A	50
PDSC	1 GANG	DUPLEX	N/A	100
PGFSC	1 GANG	W.P.GFI	N/A	20
PTSC	1 GANG	TOGGLE	N/A	100

PVC WEATHERPROOF COVERS

Forms weatherproof seal for wiring devices inside PVC boxes



Material: PVC, Neoprene Gasket

Certifications: UL Listed



ITEM#	TRADE SIZE	COVER	INNER QTY	MASTER QTY
PVSD-20	2 GANG	COMBO SWITCH DUPLEX	N/A	10
PVTC-15	1 GANG	TOGGLE SWITCH	N/A	20
PVTC-20	2 GANG	TOGGLE SWITCH	N/A	10
PWDRC	1 GANG	DUPLEX	N/A	20

PVC 2-HOLE STRAPS

Secures conduit to surface



Material: PVC

ITEM#	TRADE SIZE	INNER QTY	MSTR. QTY	ITEM#	TRADE SIZE	INNER QTY	MSTR. QTY
PS-50	1/2"	100	400	PS-200	2"	25	200
PS-75	3/4"	100	400	PS-250	2-1/2"	N/A	100
PS-100	1"	100	500	PS-300	3"	N/A	100
PS-125	1-1/4"	50	400	PS-400	4"	N/A	50
PS-150	1-1/2"	25	225	PS-500	5"	N/A	10

PVC SERVICE ENTRANCE HEADS

Caps overhead service entrance



Material: PVC

Certifications: UL Listed, CSA Listed



ITEM#	TRADE SIZE	INNER QTY	MSTR. QTY	ITEM#	TRADE SIZE	INNER QTY	MSTR. QTY
PMH-50	1/2"	N/A	25	PMH-200	2"	N/A	4
PMH-75	3/4"	N/A	20	PMH-250	2-1/2"	N/A	2
PMH-100	1"	N/A	15	PMH-300	3"	N/A	2
PMH-125	1-1/4"	N/A	20	PMH-350	3-1/2"	N/A	2
PMH-150	1-1/2"	N/A	4	PMH-400	4"	N/A	2

PVC BASE SPACERS

Used with intermediate spacers to provide uniform spacing between the rows and columns of conduits for below grade duct bank applications



Material: PVC

ITEM#	TRADE SIZE	INNER QTY	MSTR. QTY	ITEM#	TRADE SIZE	INNER QTY	MSTR. QTY
PBS-200200	2" x 2"	N/A	150	PBS-500150	5" x 1-1/2"	N/A	140
PBS-200300	2" x 3"	N/A	100	PBS-500200	5" x 2"	N/A	60
PBS-300300	3" x 3"	N/A	80	PBS-500300	5" x 3"	N/A	50
PBS-400200	4" x 2"	N/A	80	PBS-600300	6" x 3"	N/A	40
PBS-400300	4" x 3"	N/A	60				

PVC INTERMEDIATE SPACERS

Used with base spacers, to provide uniform spacing between the rows and columns of conduits for below grade duct bank applications



Material: PVC

Features: Rebar holder slots accommodate a maximum rebar diameter of 5/8" for the 2" conduit size, and 7/8" for all other sizes. Spacers provide a 3" clearance from the trench base to the bottom of the first conduit.

Notes: Install spacers every 5 to 6 feet for proper and even support of the conduit assembly.

ITEM#	TRADE SIZE	INNER QTY	MSTR. QTY	ITEM#	TRADE SIZE	INNER QTY	MSTR. QTY
PVS-200200	2" x 2"	N/A	200	PVS-400300	4" x 3"	N/A	60
PVS-200300	2" x 3"	N/A	150	PVS-500300	5" x 3"	N/A	60
PVS-300300	3" x 3"	N/A	160	PVS-600300	6" x 3"	N/A	40
PVS-400200	4" x 2"	N/A	80				

PVC CLEANER

Used to clean and prep PVC pipe and fittings prior to cement application



ITEM#	TRADE SIZE	INNER QTY	MASTER QTY
P-7001	1/2 PINT	N/A	24
P-7002	PINT	N/A	12
P-7003	QUART	N/A	12

PVC SOLVENT CEMENT CLEAR - REGULAR BODY

To cement and form a waterproof seal at joints of PVC pipe



ITEM#	TRADE SIZE	INNER QTY	MASTER QTY
P-6001	1/2 PINT	N/A	24
P-6002	PINT	N/A	12
P-6003	QUART	N/A	12